



HAMMOND REALTY

\$89,500

Dundurn / Blackstrap Reservoir 58 acres Land



Kevin Jarrett

Kevin.Jarrett@HammondRealty.ca

(306) 441-4152

HammondRealty.ca

Howard Nodwell

Howard.Nodwell@HammondRealty.ca

(306) 918-7106

HammondRealty.ca





HammondRealty.ca
113 3rd Ave. West
P.O. Box 1054
Biggar, SK S0K 0M0
(306) 948-5052 Office
(306) 948-5053 Fax

Dundurn / Blackstrap Reservoir 58 acres Land

58 acres of land located north of Blackstrap Reservoir and northeast of Dundurn, SK.

Farmland & Price Summary

1 parcel
58 title acres (ISC)

SAMA Information

58 total acres
13 cultivated acres
40 native pasture acres
5 wetland/bush acres
\$41,900 total 2025 assessed value (AV)
\$115,586 average assessment per 160 acres
30.4 soil final rating (weighted average)

\$89,500 Farmland Price
\$1,542 per title acre (ISC)
\$6,885 per cultivated acre (SAMA)
2.14 times the 2025 assessed value (P/AV multiple)



Detailed Description of Farmland Property

Legal Land Description							ISC	SAMA Information									SCIC	
RM	Qtr.	Sec.	Twp.	Rng.	Mer.	Ext.	Title Acres	Total Acres	Cult. Acres	Hay Acres	Pasture Acres	Other Acres	2025 Assessed Fair Value (AV)	Soil Association	Soil Texture	Soil Final Rating	Class	Risk Zone
314	NW	21	33	3	3	0	58.0	58	13	0	40	5	\$41,900	Bradwell	Loam	30.4	J	12
Totals							58.0	58	13	0	40	5	\$41,900	Weighted Average Final Rating		30.4		

Average per 160 acres \$115,586

SAMA Information

This information is collected from Saskatchewan Assessment Management Agency via field sheets on each individual parcel. It includes specific information such as: assessed value, uses of soil (cultivated, arable, pasture, wetlands, etc), number of acres for each use, soil profile information including association & texture, topography, stones, salinity and soil final rating.

Soil Final Rating

The final rating (FR) is the productivity rating for the acres adjusted for economic factors that affect the average cost of production for specified features. The economic factors include stones, topography, natural hazards, man-made hazards, tree cover and miles to market. The final rating units are index points per acre. Soils are given a rating from 100 (best) to 0 (worst). Soils with a final rating under 30 are marginal and rarely cropped.

<https://www.sama.sk.ca/property-owner-services/detailed-property-information>

Saskatchewan Crop Insurance Corporation (SCIC)

SCIC gives a class rating to every quarter section in Saskatchewan to reflect its productivity. Ratings range from Class A (best) to Class P (worst). There are 23 different risk zones in Saskatchewan. Please note a class B rating in risk zone 3 does not necessarily have the same productive capacity as a class B rating in risk zone 16.

[Sask Grains Risk Zones](http://www.saskcropinsurance.com/resources/maps/sask-grains-risk-zone/) <http://www.saskcropinsurance.com/resources/maps/sask-grains-risk-zone/>

[Parcel Crop Insurance Rating](https://www.scic.ca/?/resources/calculators/generic-what-if-insurance-cost-calculator) <https://www.scic.ca/?/resources/calculators/generic-what-if-insurance-cost-calculator>



NW-21-33-3-W3

NE-21-33-3-W3

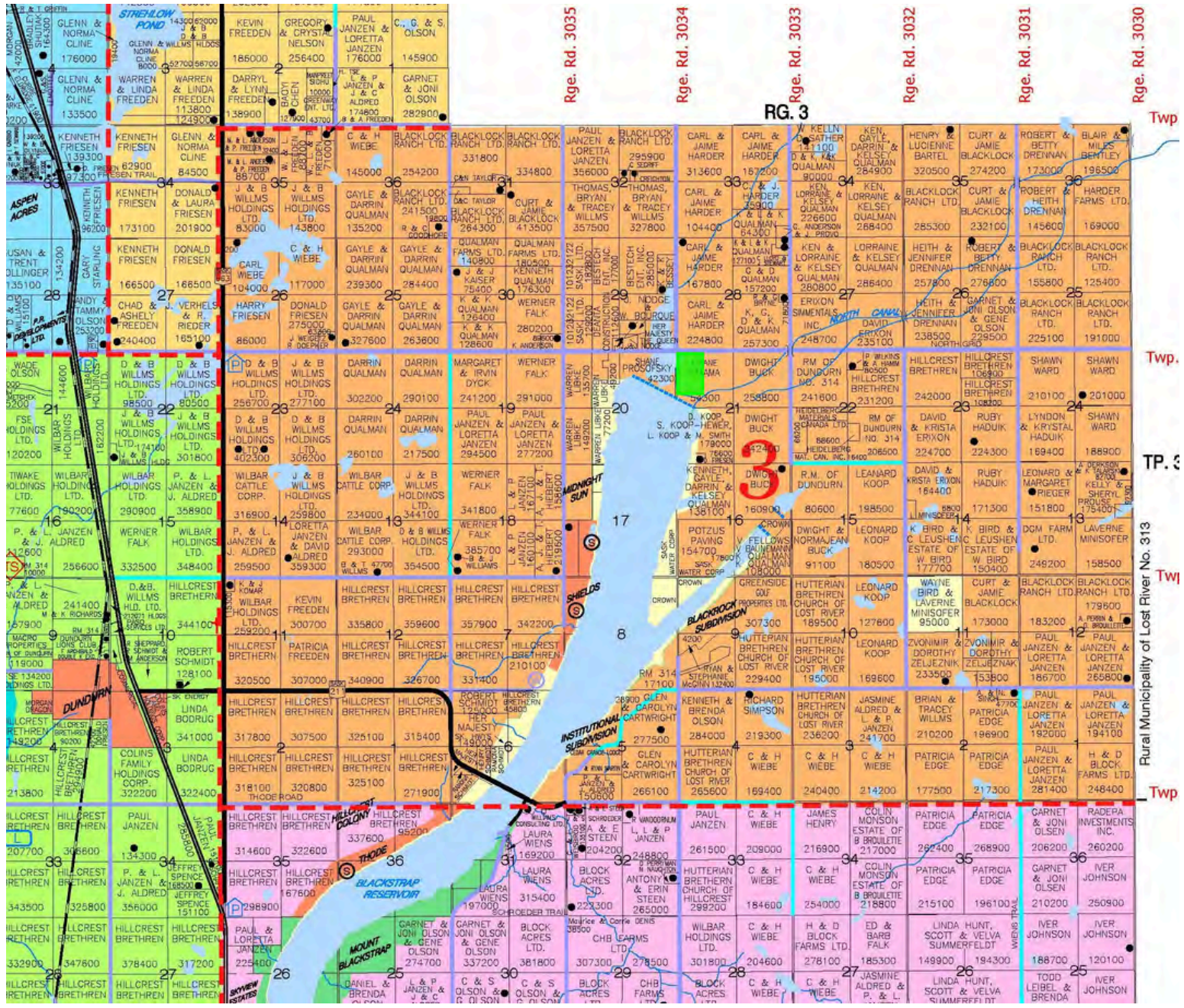
Google Earth

Image © 2026 Airbus



1000 ft





Rge. Rd. 3035

Rge. Rd. 3034

Rge. Rd. 3033
RG. 3

Rge. Rd. 3032

Rge. Rd. 3031

Rge. Rd. 3030

Twp

Twp.

TP. 3

Twp

Twp

Rural Municipality of Lost River No. 313

Twp